



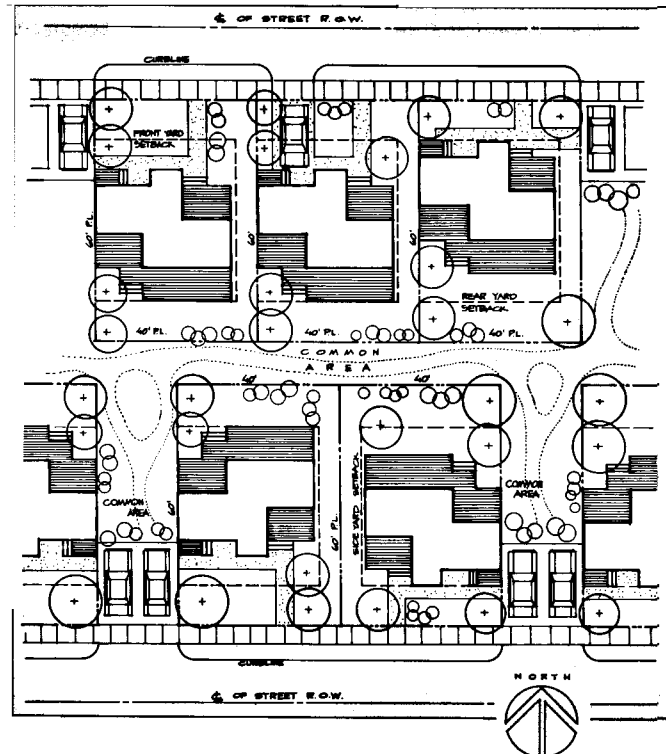
## Cypress Breeze

by Brad Edgerly  
 Arrowstreet, Inc.  
 212 Elm Street  
 Somerville, MA 02144  
 (617) 623-5555

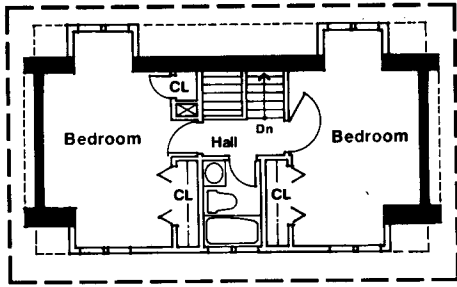
Cypress Breeze has an ideal floor plan for Florida comfort, with rooms open to cross ventilation and plenty of porch and balcony space for outdoor enjoyment. The second floor bedrooms even feature private balconies. Solid walls on the east and west block the hot summer sun and assure privacy. The 900-square-foot base house can be built with one bath or bath and a half. The home can be easily expanded by adding dormers and bedrooms to create a third floor, and the plan offers two expansion options: a master suite and study, or two equal-size bedrooms.

This conventional wood frame home is designed to face north, but will also provide energy efficiency if sited to the south.

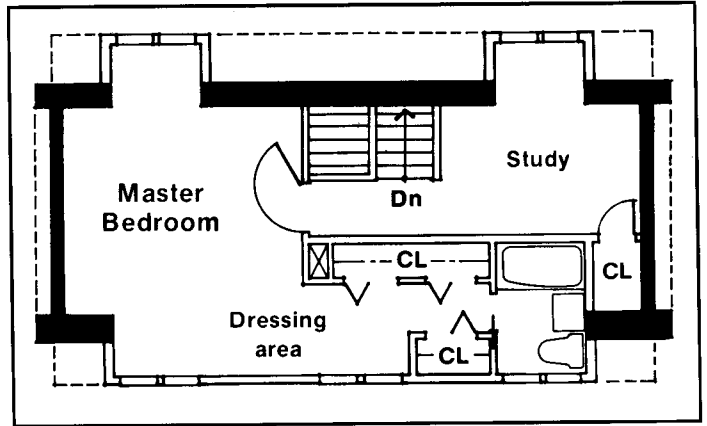
Brad Edgerly has a bachelor of design degree from the University of Florida and a master's in architecture from the Massachusetts Institute of Technology. He is a principal with Arrowstreet, Inc., a firm of professional architects, land planners and urban designers.



# CYPRESS BREEZE



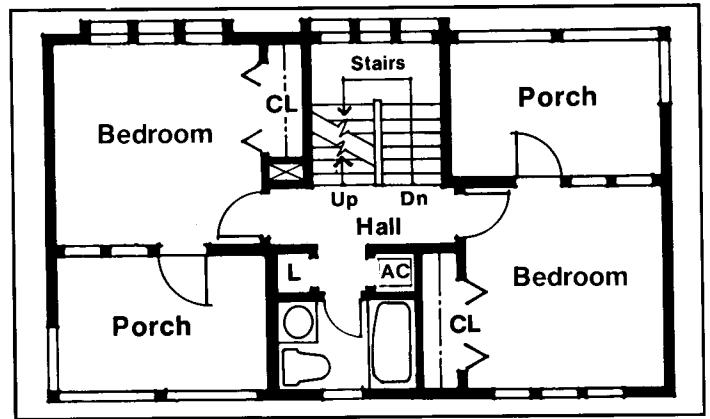
Alternate third floor plan



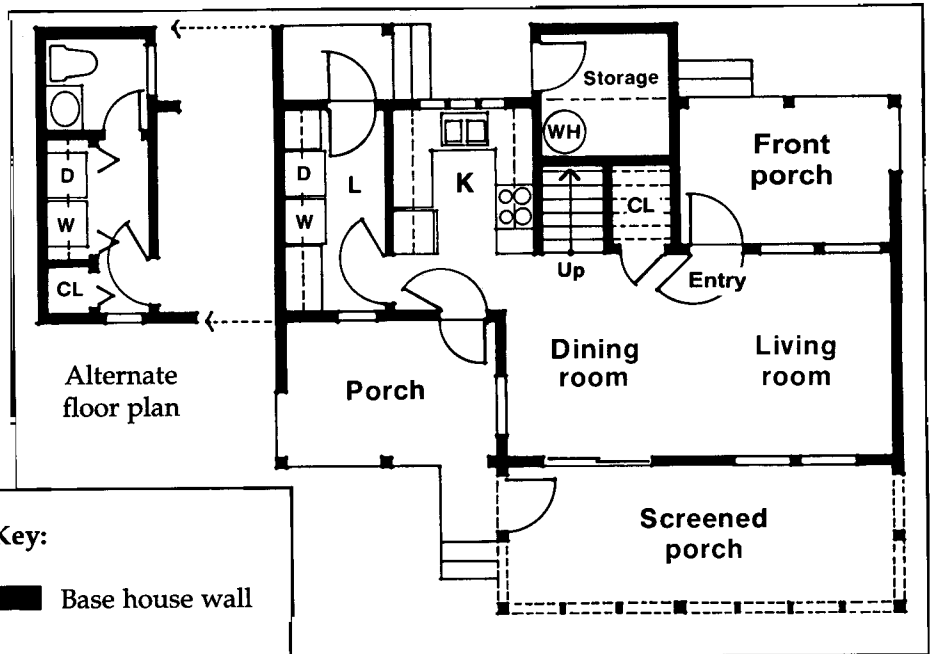
Third floor plan

### Judges Comments:

- Elevations very appealing, contemporary victorian.
- Nice site plan.
- Outstanding.
- Designer has done an outstanding job in making everything work.




Second floor plan

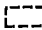


First floor plan

### Key:

 Base house wall

 Expansion

 Screen

Alternate floor plan

### Land Development Scheme:

This home will fit on lots as small as 2400 square feet. Common landscape areas provide privacy and community amenities and can serve as retention or park space. The scheme shown can be built at a gross density (including streets and common area) of seven to eight units per acre.